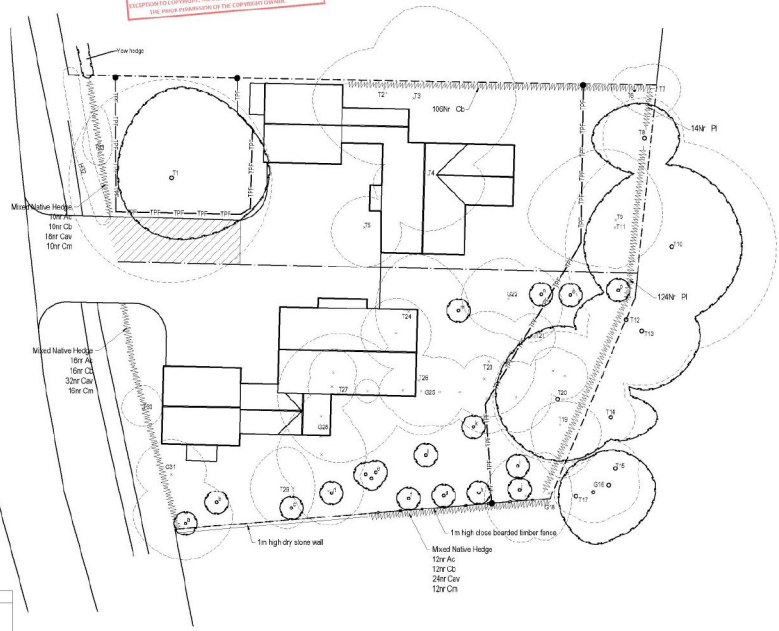




THIS COPY IS NOT VALID UNLESS IT IS SIGNED BY THE AUTHOR OR THE DESIGNER. ANY CHANGES TO THIS DRAWING MUST BE MADE BY THE AUTHOR OR THE DESIGNER. ANY CHANGES MADE BY OTHERS WILL BE AT THEIR OWN RISK. THIS DRAWING IS THE PROPERTY OF ROSETTA LANDSCAPE DESIGN AND WILL BE KEPT ON FILE FOR A PERIOD OF 10 YEARS AFTER THE DATE OF COMPLETION OF THE PROJECT. ANY REPRODUCTION OR DISTRIBUTION OF THIS DRAWING WITHOUT THE WRITTEN PERMISSION OF ROSETTA LANDSCAPE DESIGN IS STRICTLY PROHIBITED.



REVISED PLAN

Additional vegetation surveyed

| Ref | Societies |
|-----|------------------------------------|
| a | Milax 'Everest' |
| b | Prunus 'Santal' |
| c | Koeleria paniculata |
| d | Milax 'Everest' |
| e | Syr baltica pendula 'Jaccardensis' |
| f | Amelanchier canadensis |
| g | Fagus sylvatica 'Dawyck Gold' |
| h | Milax 'Everest' |
| i | Alois 'Bass' |
| j | Caradaphnum japonicum |
| k | Nyssa sylvatica |
| l | Liquidambar styraciflua |
| m | Sorbus cornuta 'Olympic Flame' |
| n | Pinus nigra |
| o | Acar griseum |
| p | Daphniphyllum leylandi |

Proposed Hedging

| Nr | Code | Plant Name | H(m) | Root | Cont'd | N/m |
|-----|------|---------------------|-------|------|--------|------|
| 100 | Cb | Carpinus betulus | 45-60 | C | 3 | 4.00 |
| 130 | P1 | Prunus laurocerasus | 60-80 | C | 1 | 4.00 |

Proposed Mixed Native Hedge (4m)

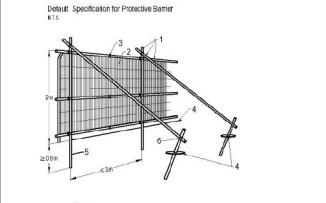
| Nr | Code | Plant Name | H(m) | Root | Cont'd | % |
|----|------|---------------------|-------|------|--------|-------|
| 38 | Ac | Acer campestre | 45-60 | C | 1 | 20.00 |
| 38 | Cb | Carpinus betulus | 45-60 | C | 1 | 20.00 |
| 74 | Car | Coronilla aemulana | 45-60 | C | 1 | 40.00 |
| 38 | Cb | Carpinus monophylla | 45-60 | C | 1 | 20.00 |

This drawing is the copyright of Rosetta Landscape Design and cannot be reproduced in any form without the express consent of the company. Written and scaled dimensions to be checked on site, any discrepancies reported prior to work commencing. If in doubt please ask.

This drawing has been prepared for the purpose of planning approval.

LEGEND

- Existing tree (to be retained)
- Existing tree to be removed
- Proposed tree (Standard (New))
- Proposed tree (Standard (Selected))
- Proposed hedge
- Area of driveway to be laid using 100mm construction & porous paving blocks backfilled with gravel (see Arboricultural Method Statement)
- Tree protection area of retained trees in line with BS 5837:2012
- Tree protection fencing to BS 5837:2012 (see detail below)



- Key
- Standard scaffold poles
 - Heavy gauge 2mm galvanized tube and welded mesh in fill panels
 - Panels secured to uprights and cross-members with wire ties
 - Ground level
 - Uprights driven into the ground until secure (minimum depth 0.6m)
 - Standard scaffold clamps
- Rev E: Revised to show tree planting within front garden - 24May16 (MP/tp)
 Rev D: Revised to show amended plant schedules - 26Mar16 (MP/tp)
 Rev C: Revised to correct requirements - 02Mar16 (MP/tp)
 Rev B: Revised to correct comments to show additional planting along the custom boundary - 11Sep15 (EP)
 Rev A: Revised to new layout, trace of "Site Plan" (HPSG 2183) - 15Mar13 (MP/tp)

DATE: 26/05/16

PROJECT: Willow House, Normandy

TITLE: Detailed Landscape Proposals

CLIENT: A & D Sturdy Ltd

DATE: 23 May 13 SCALE: 1:200 SHEET: A2

DRAWN: MP/tp DRAWING NO: 2322/4

CHECKED: MP REVISION: E

ROSETTA LANDSCAPE DESIGN
 Chartered Landscape Architects
 1 The Court, Regatta Way
 York, YO26 3BA
 Telephone: +44 (0)1904 756225
 Fax: +44 (0)1904 756222
 Email: info@rosetta-landscape.co.uk
 Web: www.rosetta-landscape.co.uk